

CORNER STONE

THE COMPLETE LOOK OF STONE



Custom Corner Stone - Pearl White Tapestry with a one inch top margin (inset Rock-Stone - Pearl White)



CORNER STONE



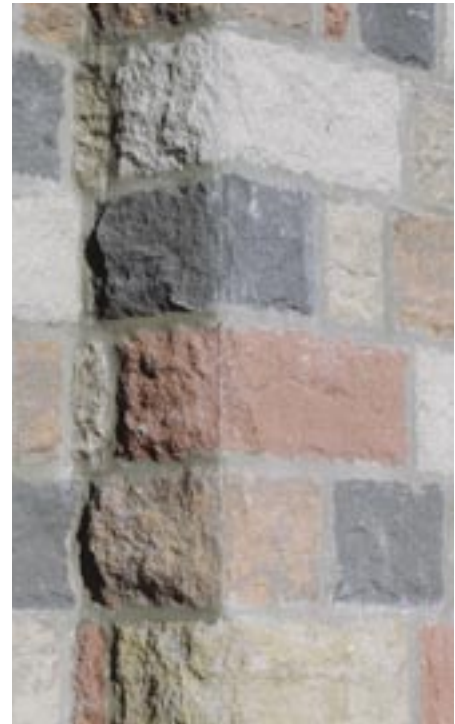
Corner Stone Rock-Stone in Desert Buff and Executive Grey shown with a Charington Pearl White Tex-Stone Border



Corner Stone - Pearl White Rock-Stone



Corner Stone - Pearl White Tapestry



Corner Stone - Field Stone 12



CORNER STONE



Corner Stone - Chamois Tapestry



Corner Stone - Antique Bronze Rock-Stone with Tex-Stone Charington Details Detail of Corner Stone on the left

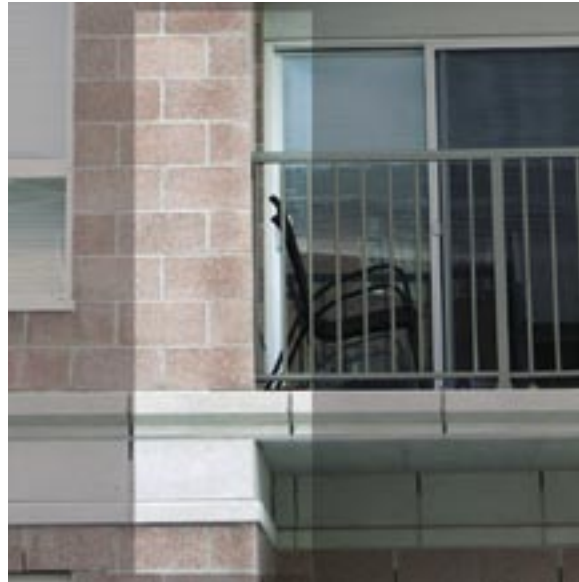


CORNER STONE

CORNER RUNNING BOND DETAIL



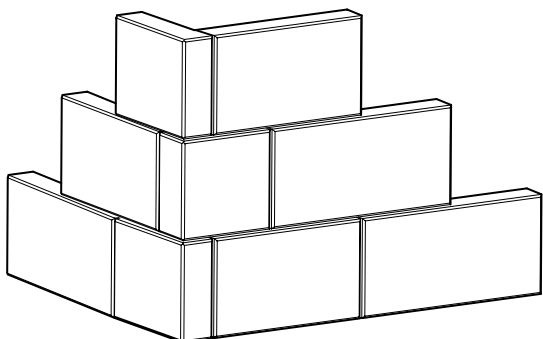
Actual Corner Detail



What it would have looked like with Corner Stone

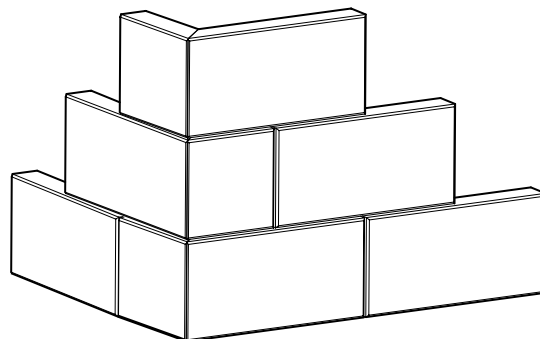
ORDINARY TWO PIECE CORNER

- Requires special order piece with one face and one end finished.
- Requires special order or field cut and bevel piece to restore running bond.



CORNER STONE CORNER

- Corner Stone made to your specifications maintains bond in a single piece.
- Corner Stone provides a cleaner and natural structural block appearance in a veneer stone.
- With the special pieces/finishing required to do a two piece corner Corner Stone's additional cost is only marginally more.



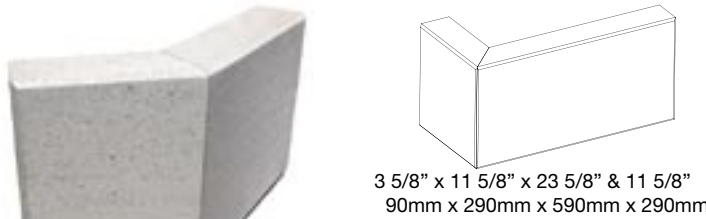
CORNER STONE

SPECIFICATIONS

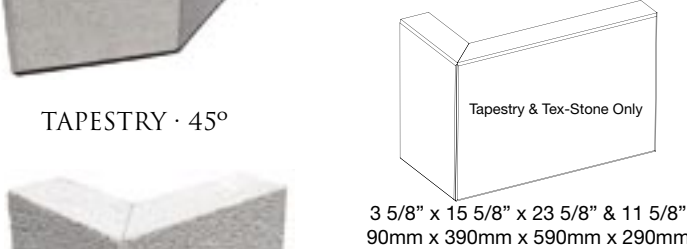
Stainless Steel Pinned Corners	Yes
Corners Epoxied	Yes
Maximum Face Length	23.625" 590mm
Maximum Return Length	23.625" 590mm
Custom Heights Available	Yes
Maximum Stone Height (Tapestry & Tex-Stone Only)	15.625" 390mm
Imperial Sizing	Yes
Metric Sizing	Yes
Custom Angles Available	Yes



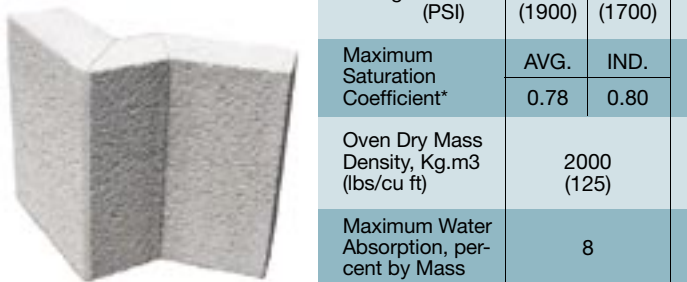
ROCK-STONE 90°



TAPESTRY · 45°



TEX-STONE 90°



TEX-STONE
CUSTOM ANGLE



STONE MASONRY UNIT TEST REPORT**

CSA STANDARD A165 Series-94 (ASTM C-55-01a Equivalent)			SHOULDICE DESIGNER STONE COLLECTION EXCEEDS CODE				
TYPE	I-25 (I)		90x90x290mm (4"x4"x12")	90x90x390mm (4"x4"x16")	90x190x390mm (4"x8"x16")	90x190x590mm (4"x8"x24")	90x290x590mm (4"x12"x24")
	AVG.	IND.					
Minimum Compressive Strength MPA (PSI)	25 (1900)	21.21 (1700)	36.4 (5278)	38.7 (5612)	28.2 (4089)	30.1 (4365)	28.9 (4190)
Maximum Saturation Coefficient*	0.78	0.80	0.69	0.71	0.64	0.67	0.69
Oven Dry Mass Density, Kg.m3 (lbs/cu ft)	2000 (125)		2137 (132)	2199 (136)	2076 (128)	2242 (136)	2109 (130)
Maximum Water Absorption, per-cent by Mass	8		6.4	6.7	7.1	6.8	6.9

* Saturation coefficient means the ratio of the absorption after 24 h of submersion in cold water to the absorption after 5 h of submersion in boiling water as determined in accordance with CSA Standard CAN3-A82.2.

** Results of testing by Peto MacCallum Consulting Engineers.



CORNER STONE TEXTURES & COLOURS

Tapestry

- Polished Face Texture
- Standard Bevel on All Face Edges

Tex-Stone

- Stipple Face Texture
- Optional Bevel on All Face Edges

Rock-Stone

- Rocked Face Texture
- Chiseled Profile on All Face Edges

ARCHITECTURAL COLLECTION COLOURS

Larger colour swatches can be found at the end of the Architectural Collection Section.

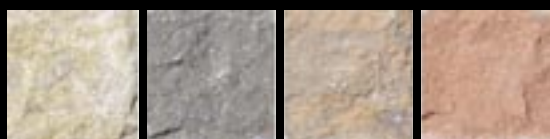


DESIGNER COLLECTION COLOURS

Larger colour swatches can be found at the end of the Designer Collection Section.



Field Stone



These colour representations have been printed as closely as possible to actual product colours. However, no colour representation can match the actual Beauty of Shouldice Designer Stone Products.

